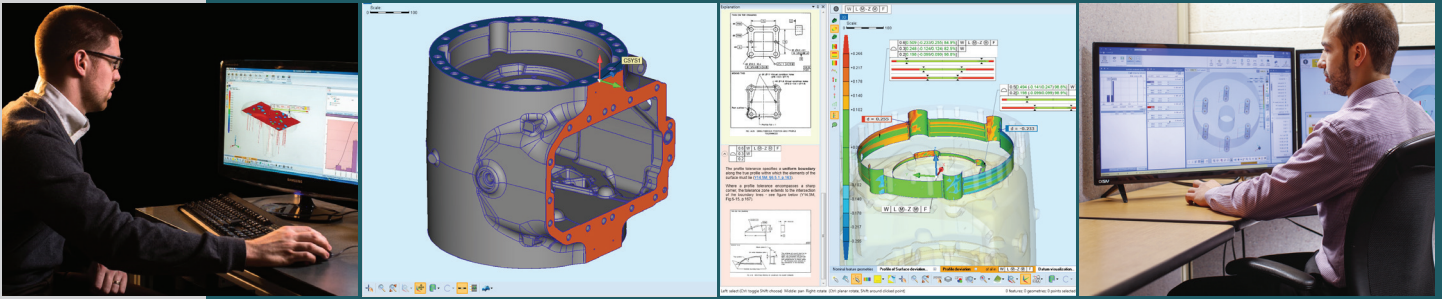




EVOLVE SPC | Model-Based Family Of Software

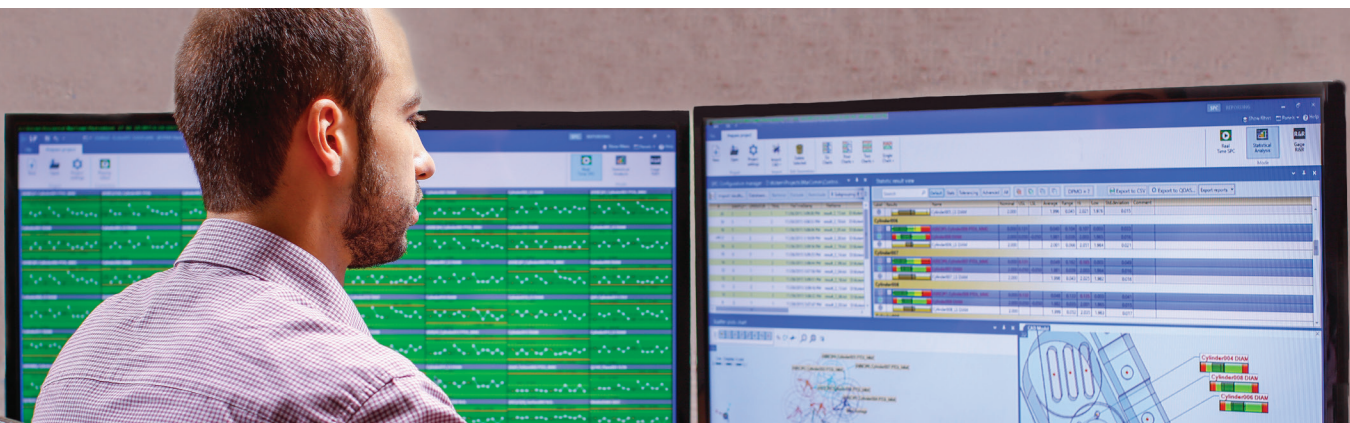
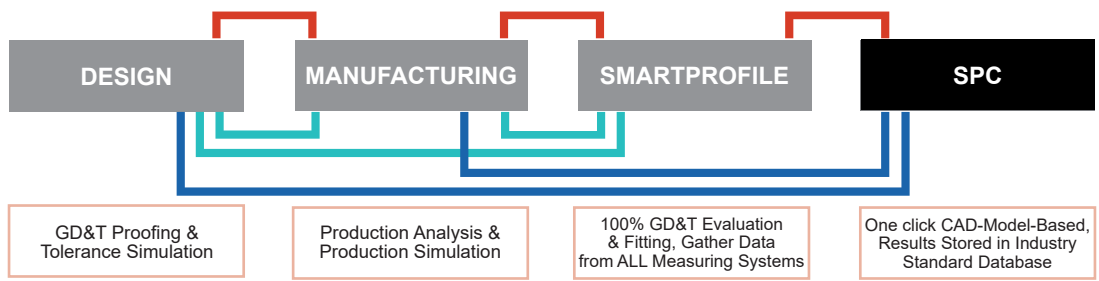


The EVOLVE™ Software Suite

EVOLVE is a model-based family of software that seamlessly connects Design, Production and Inspection Teams across a manufacturing enterprise. It integrates easily with 3D CAD and CAM, incorporating PMI data automatically. EVOLVE optimizes the design process and integrates with production, enabling manufacturers to shorten product design/development time, normalize inspection and measurement techniques, improve process control, and manage product tolerances throughout the manufacturing process.

EVOLVE SPC

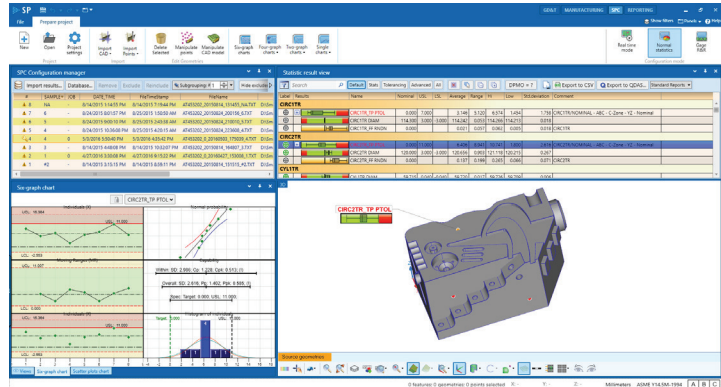
KOTEM introduces EVOLVE SPC, which is a full statistical process control program that can be used as either a standalone product with existing measuring systems or integrated into the EVOLVE Suite. EVOLVE SPC information is visualized in the 3D CAD model as tables and graphs, making it easier to see process variations by characteristic. Legacy measurement data can be converted to model-based data using a simple wizard.



Statistical Process Control

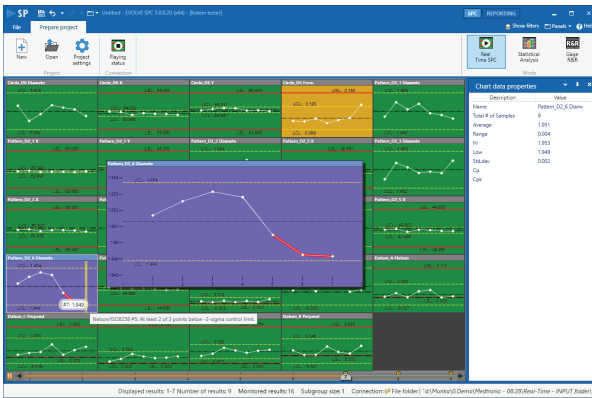
3D CAD Model Based

EVOLVE SPC information is easily visualized in the 3D CAD model, tables and graphs making it easier to see process variations by characteristic.



Monitor Multiple Machines

EVOLVE SPC allows you to monitor one or more measurement machines, allowing real time updates and tracking of the current manufacturing state.



EVOLVE SPC Benefits

- 3D CAD model based.
- Visualization of data points by graph, table, and CAD representation.
- Basic and advanced reporting.
- One or multiple measurement inputs.
- Real-time control charts and gage R&R to monitor processes while being able to investigate specific issues.
- Full database to support data trends and long term analysis.

To learn more about EVOLVE SPC go to www.kotem.com/evolve

